

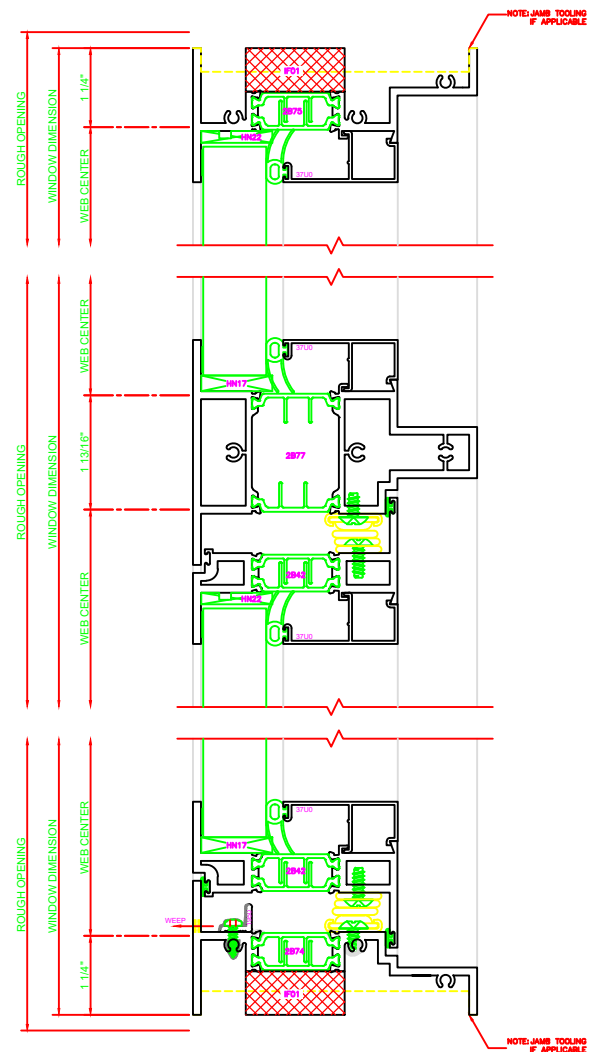
430	JAMB
	SERIES: 450X
	CASEMENT IN
	4-BAR ARMS

431	JAMB
	SERIES: 450X
	CASEMENT IN
	4-BAR ARMS

100	HEAD
	SERIES: 450X
	FIXED

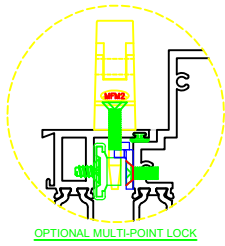
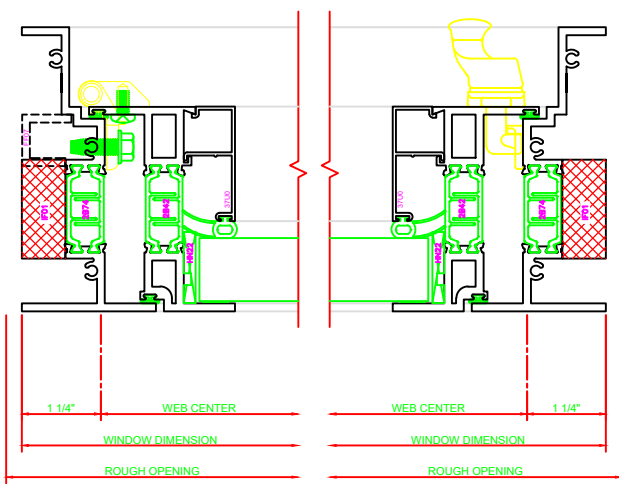
532	MEETING RAIL
	SERIES: 450X
	FIXED (C.I.)
	4-BAR ARMS

230	SILL
	SERIES: 450X
	CASEMENT IN
	4-BAR ARMS



4-BAR ARMS BUTT HINGE

13 = ERECTOR NOTE:
THE HINGED JAMB FRAME SHALL BE INSTALLED PLUMB. ALL HINGES SHALL BE SECURELY BLOCKED AND ANCHORED TO THE CONDITION THROUGH THE HINGES OR AS CLOSE AS POSSIBLE TO THE HINGES.



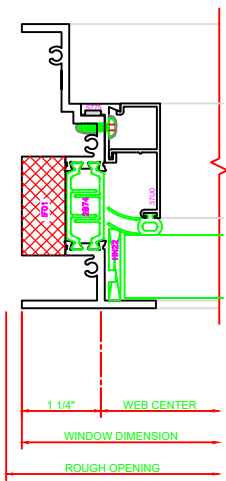
432	JAMB
	SERIES: 450X
	CASEMENT IN
	BUTT HINGE

431	JAMB
	SERIES: 450X
	CASEMENT IN
	4-BAR ARMS

100	HEAD
	SERIES: 450X
	FIXED

536	MEETING RAIL
	SERIES: 450X
	FIXED (C.I.)
	BUTT HINGE

231	SILL
	SERIES: 450X
	CASEMENT IN
	BUTT HINGE



402	JAMB
	SERIES: 450X
	FIXED

